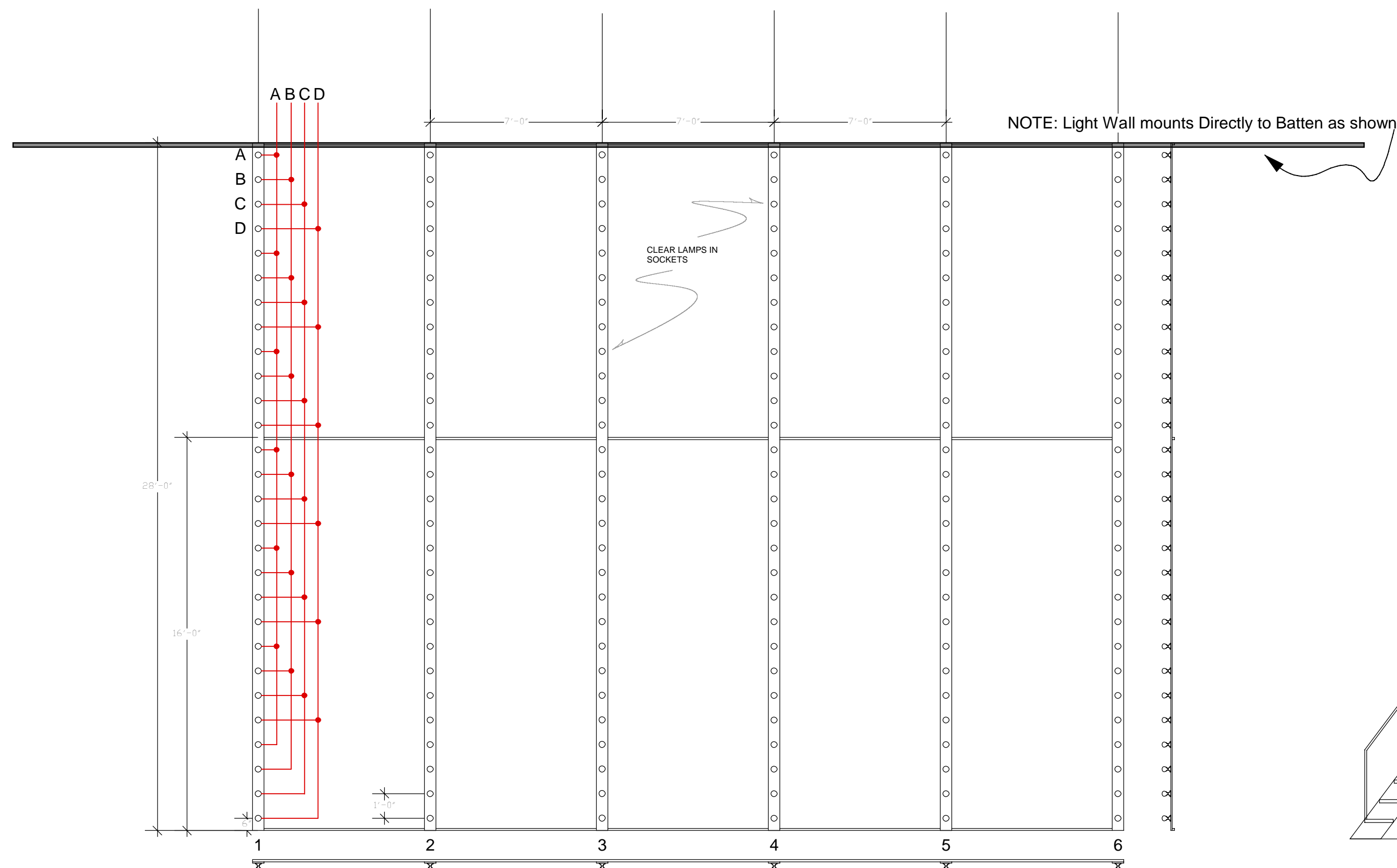
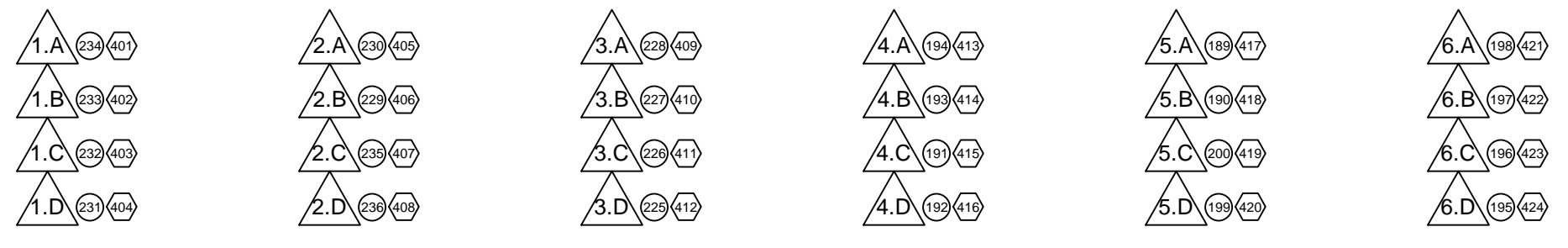


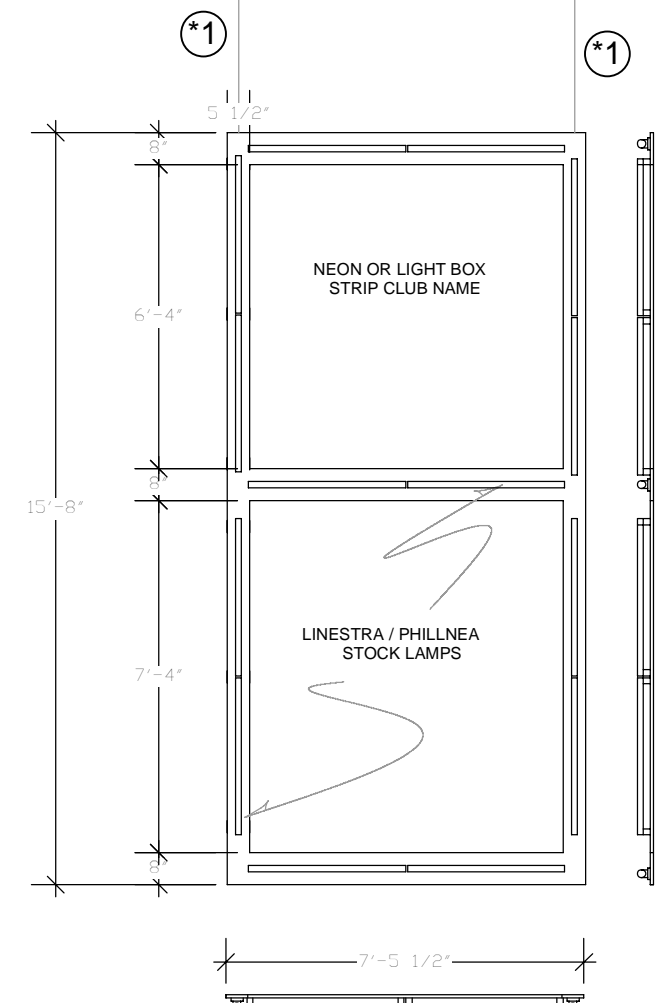
LIGHT WALL



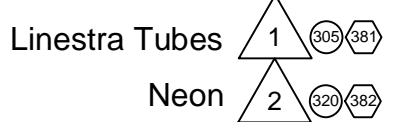
NOTE: Light Wall is wired in 4-circuit chase pattern. Each upright terminates with 4 plugs at the top. Wiring circuitry is typical across all uprights. Lamps are A19 100w Clear. Please run Multi Cable Drops to each end of the Batten to minimize risk of damage.



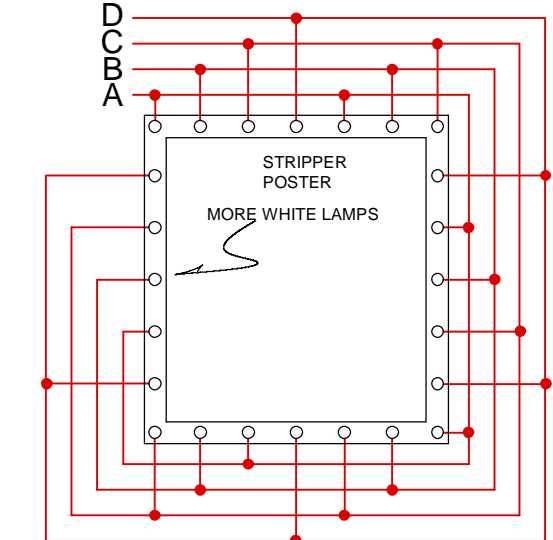
CLUB SIGN



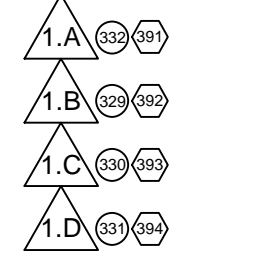
NOTE: Club Sign wiring unknown. Plug Termination as yet unknown. Lamps are 1 meter Linestra Tubes - 150w ea. *Neon* is Red NeoFlex - requires Ghost Load. *1* Please wire 1 circuit up each lift line.



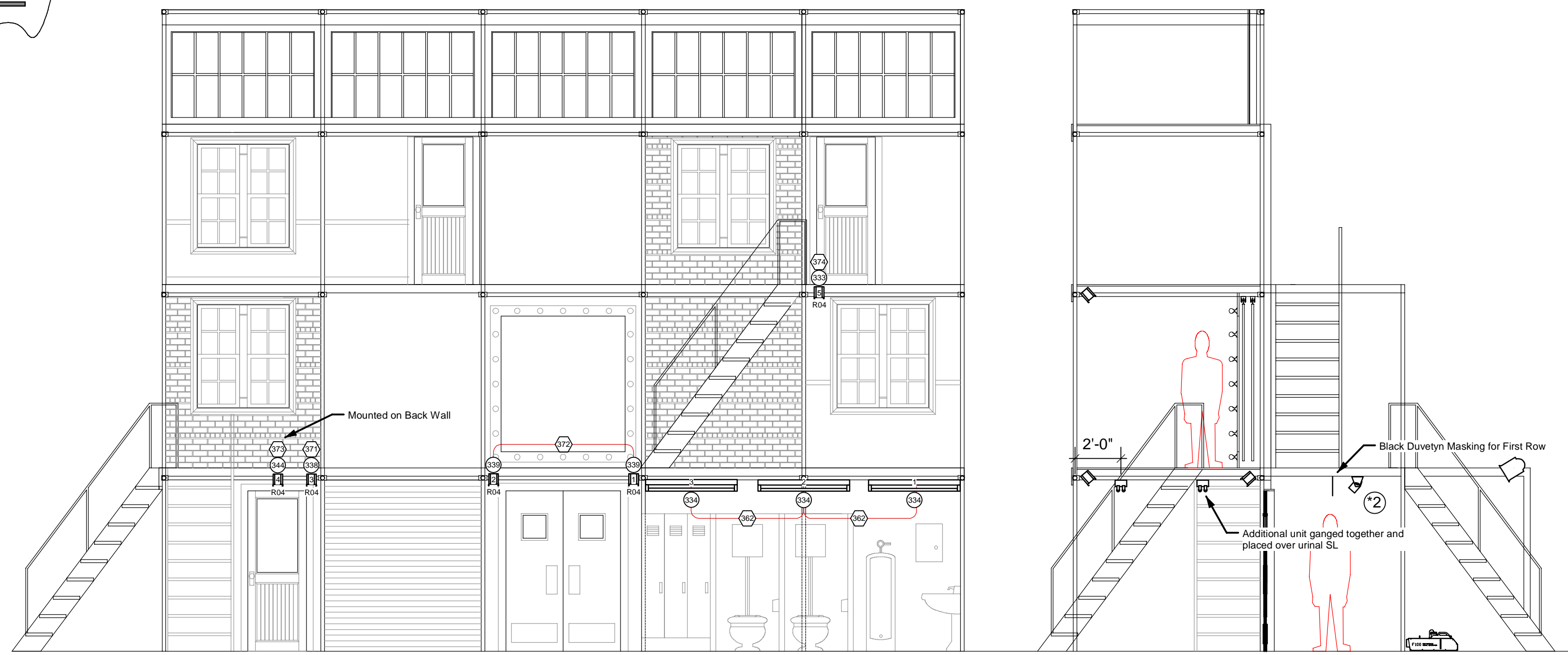
POSTER FRAME



NOTE: Poster Frame is wired in similar 4-circuit chase pattern. Plug Termination as yet unknown. Lamps are A19 100w Clear.

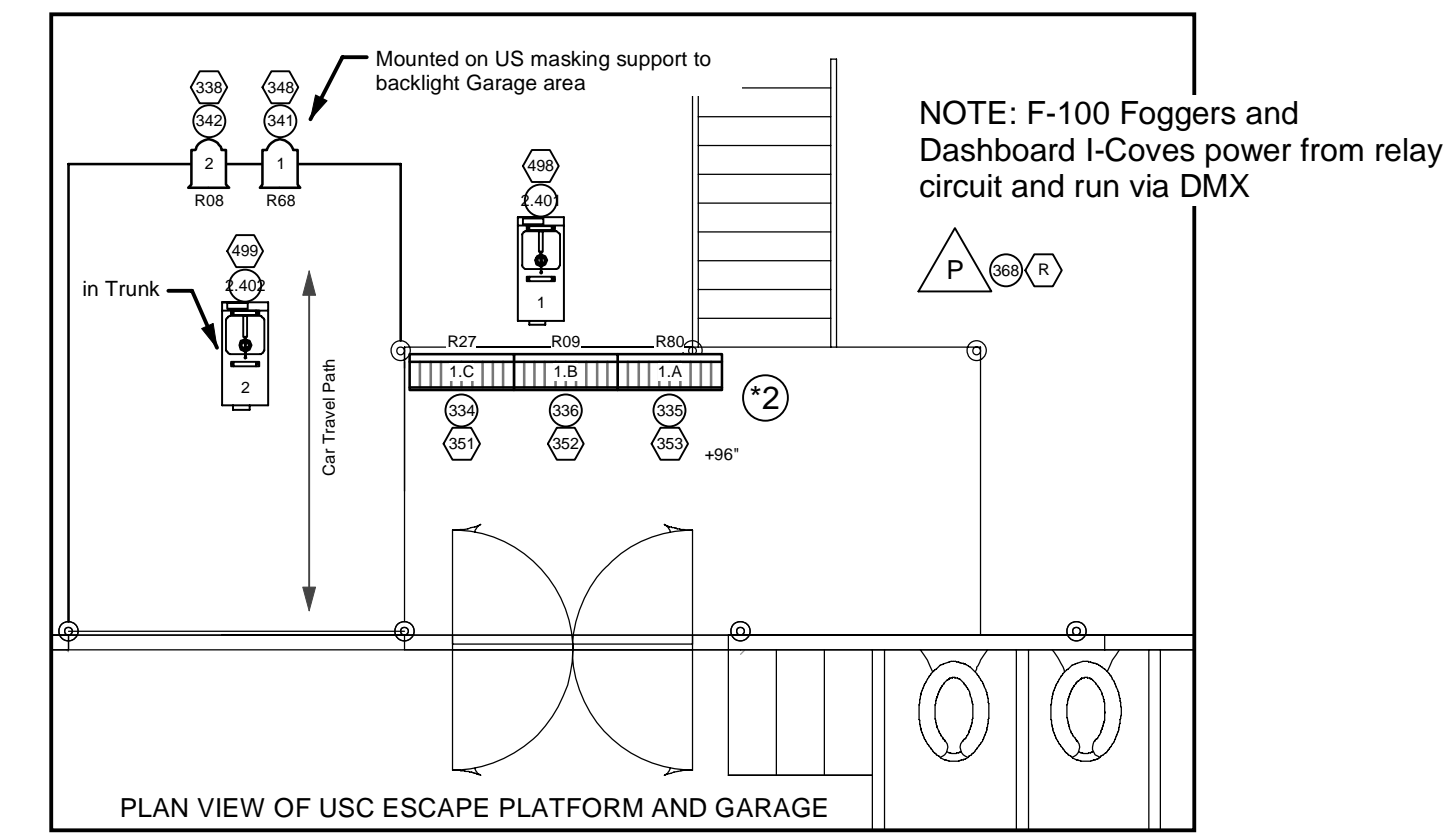


FLUORESCENTS AND OTHER SET MOUNTS



NOTE: Fluorescent Tubes are Dimmable Ballast, 4' Long, 32w T8 double tube fixtures at 4100°K. Currently stored in Scene Shop - see Steve Miller or Steve Waxler.
NOTE: Exact Fixture mounting methods currently uncertain. Ground floor fluorescents may be exposed and hang under pipe structure. Third floor fixtures should be recessed as high as possible into the platforming. All Inkie's should be mounted so that they are masked behind 9" facing.

UPSTAGE FLOOR / GARAGE



NOTE: *2* 6' Zip Strip mounted to the underside of the 2nd floor escape platform. To backlight through center doors. Floor trunions may be screwed into platform. Check with TD. Also note Black Duvetyn Masking for audience.
NOTE: F-100 #2 will be placed in the trunk of the car and piped using 4" Dryer hose through a rear speaker hole to simulate "fumes" in the car. It will require Relay power and DMX control.

CAR Dashboard Lights

NOTE: Dashboard Lights to be 4 Color-Kinetics I-Cove fixtures taped to the Instrument panel to light Actor's face. Fixtures require 3 Channels for R, G, B. Also require Relay power and DMX to be daisy-chained off of Trunk Fogger. Cables should track out of the upstage (rear) end of the car to be paged by Deck Electrician. Cable may be loomed together with single Audio Cable feeding in-car speaker.

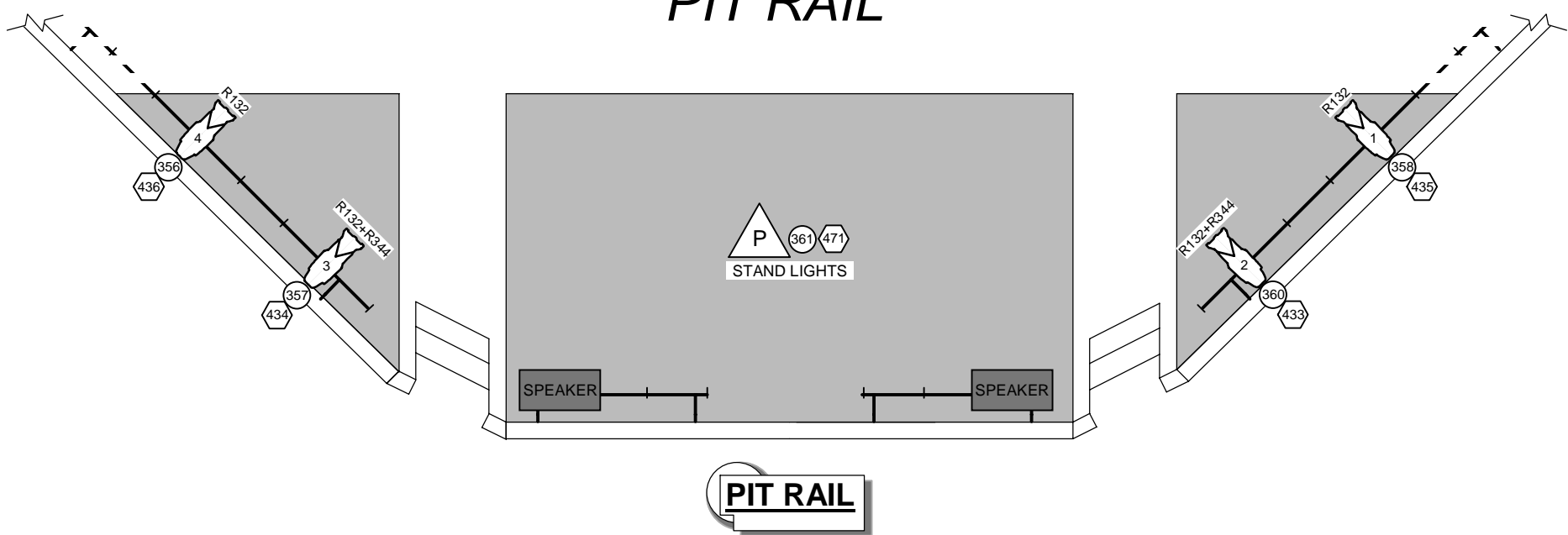
Small Police Lights

NOTE: 2 Small Police Beacons to be placed on Roof of Car at Intermission

DF-50 Hazer

NOTE: With Fan. Placed on Grid, USC. Powered by Relay Circuit.

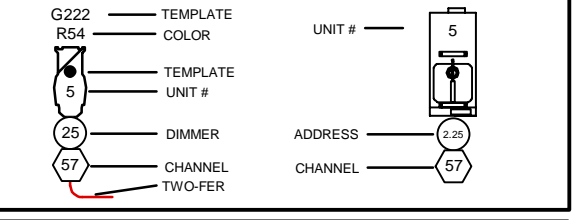
PIT RAIL



KEY TO SYMBOLS

- 4' Dimmable Fluorescent - 32w T8 4100°K
- Practical Circuit
- F-100 Fogger Side View
- F-100 Fogger
- ETC Source Four 50' 575w
- 6' Fresnel - 1kw
- 3 Ckt "Zip Strip", 750w x3
- 3' Fresnel - "Inkie" - 300w
- 1m Linestra Tube - 150w
- A19 A-Lamp, Clear - 150w

TYPICAL



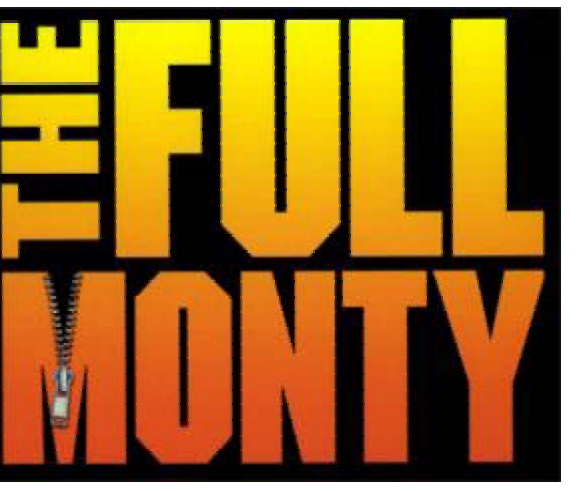
NOTES

1. Fluorescent Tubes are Dimmable Ballast, 4' Long, 32w T8 double tube fixtures at 4100°K. Currently stored in Scene Shop - see Steve Miller or Steve Waxler.
2. Light Wall is wired in 4-circuit chase pattern. Each upright terminates with 4 plugs at the top. Wiring circuitry is typical across all uprights. Lamps are A19 100w Clear. Please run Multi Cable Drops to each end of the Batten to minimize risk of damage.
3. Exact Set Mount Fixture mounting methods currently uncertain. Ground floor fluorescents may be exposed and hang under pipe structure. All Inkie's should be mounted so that they are masked behind 9" facing.
4. 6' Zip Strip mounted to the underside of the 2nd floor escape platform. To backlight through center doors. Floor trunions may be screwed into platform. Check with TD.
5. F-100 #2 will be placed in the trunk of the car and piped using 4" Dryer hose through a rear speaker hole to simulate "fumes" in the car. It will require Relay power and DMX control.
6. F-100 Foggers power from Relay Circuit and control via DMX.
7. DF-50 Hazer With Fan placed on Grid, USC. Powered by Relay Circuit.
8. Club Sign wiring AND Plug Termination as yet unknown. Lamps are 1 meter Linestra Tubes - 150w ea. *Neon* is Red NeoFlex - REQUIRES GHOST LOAD. Please wire 1 circuit up each lift line.
9. Poster Frame is wired in similar 4-circuit chase pattern. Plug Termination as yet unknown. Lamps are A19 100w Clear.

THIS DRAWING REPRESENTS VISUAL CONCEPTS AND CONSTRUCTION SUGGESTIONS ONLY, AND DOES NOT REPLACE THE KNOWLEDGE AND ADVICE OF A LICENSED STRUCTURAL ENGINEER. THE DESIGNER AND HIS ASSISTANTS ARE UNQUALIFIED TO DETERMINE THE STRUCTURAL APPROPRIATENESS OF THIS DESIGN, AND WILL NOT ASSUME RESPONSIBILITY FOR IMPROPER ENGINEERING OR USE.

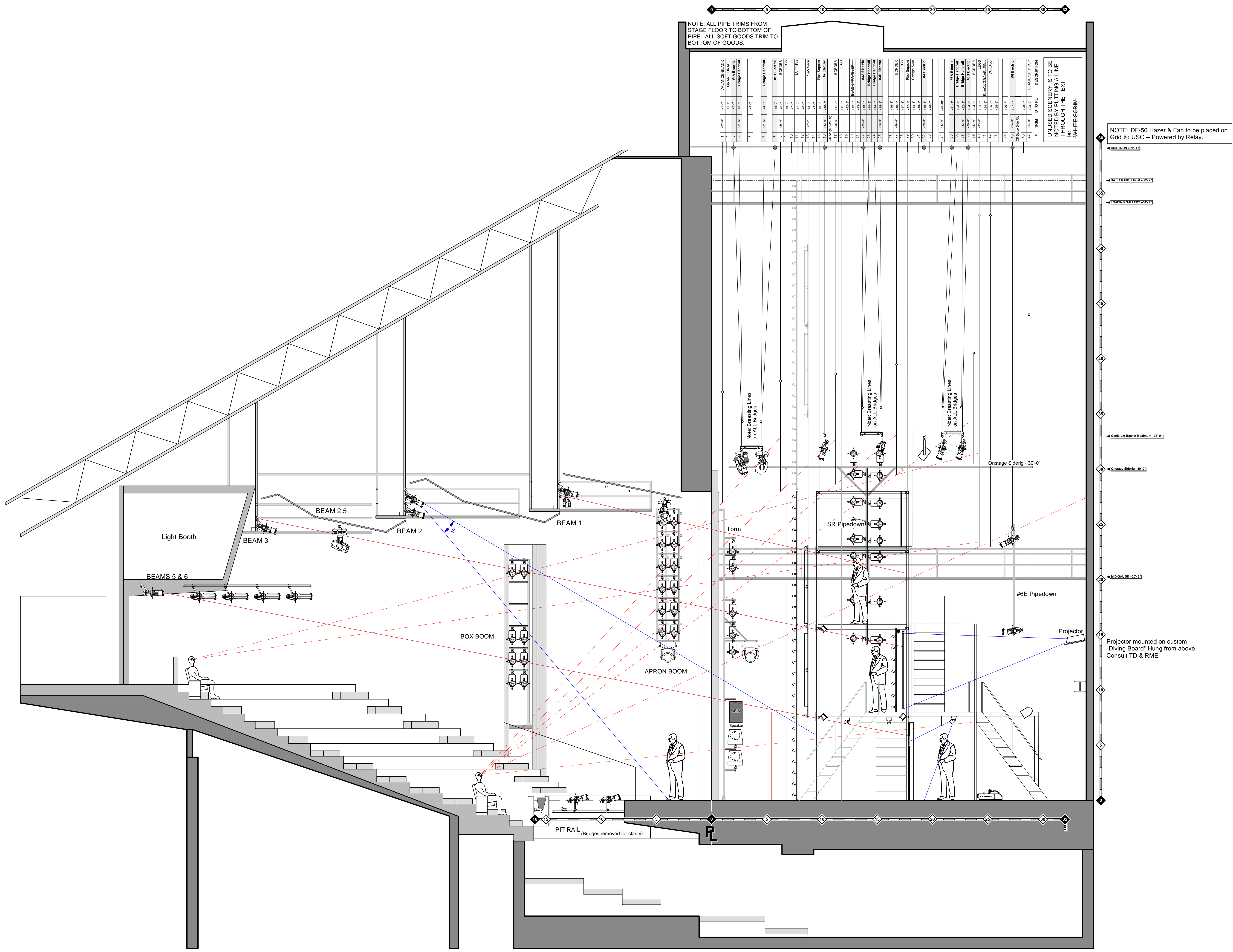
Lighting by Jonathan M. Fuchs

Directed by Aubrey Berg
Scenery by Brian Ruggaber
Assistant Lighting Designers Randi Miller
Master Electrician Robert Moyer
Master Electrician gregory s. falcone

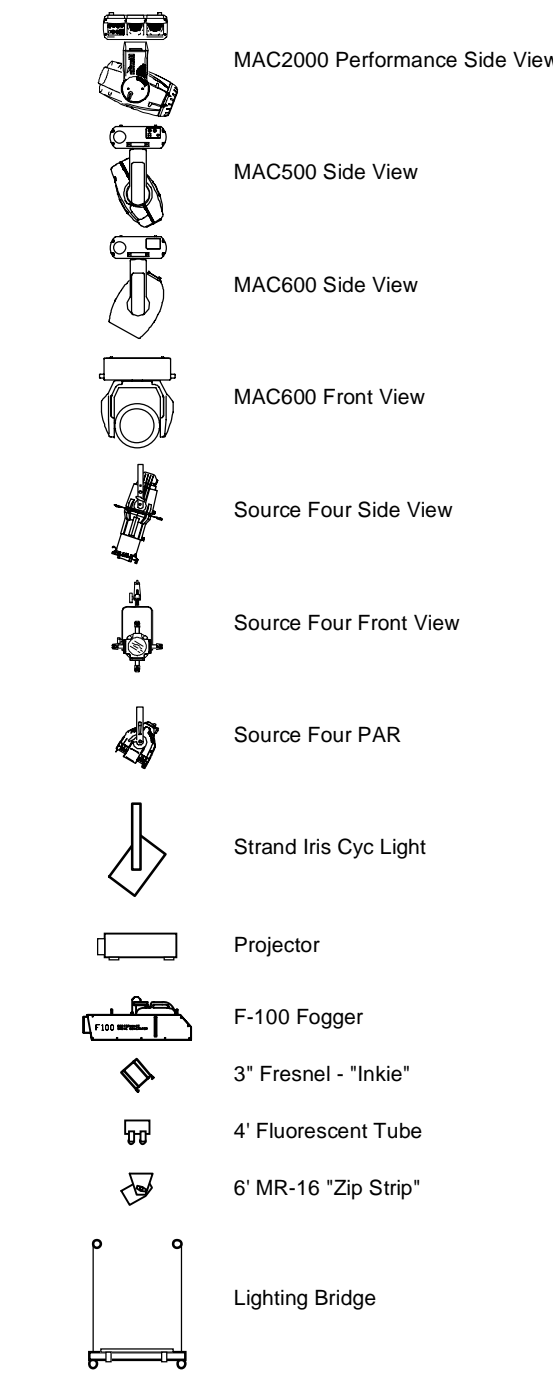


SET MOUNTS

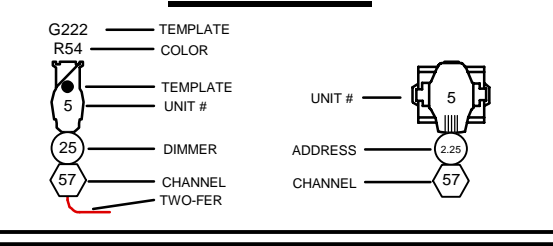
DRAWN BY: JMF	SCALE: 1/4" = 1'-0"
Due Dates:	PLATE #
#1 January 22 07 PRELIM	2
#2 January 29 07 FINAL	
#3 February 12 07 LOAD-INFOCUS	
#4 February 22 07 SHOW OPENING	
#5 April 10 07 THEISIS BOOK	
Designer Version: #4 UPDATED	Date: 3/14/07



KEY TO SYMBOLS



TYPICAL



NOTES

1. ALL PIPE TRIMS FROM STAGE FLOOR TO BOTTOM OF PIPE. ALL SOFT GOODS TRIM TO BOTTOM OF GOODS.
2. FIRE RAG ELECTRICS AS NEEDED.
3. BREASTING LINES ON ALL BRIDGES.
4. MAC 2000s HANG IN MOVER POSITION BETWEEN BEAMS 2 & 3
5. PROJECTOR IS LIGHTING DEPARTMENT PANASONIC. MOUNTED ON CUSTOM DIVING BOARD TO BE CONSTRUCTED AND INSTALLED BY LIGHTING ON US I-BEAM. POWERED BY LIGHTING RELAY CIRCUIT.
6. DF-50 HAZER AND FAN PLACED USC ON GRID. POWERED BY RELAY CIRCUIT.

THIS DRAWING REPRESENTS VISUAL CONCEPTS AND CONSTRUCTION SUGGESTIONS ONLY, AND DOES NOT REPLACE THE KNOWLEDGE AND ADVICE OF A LICENSED STRUCTURAL ENGINEER. THE DESIGNER AND HIS ASSISTANTS ARE UNQUALIFIED TO DETERMINE THE STRUCTURAL APPROPRIATENESS OF THIS DESIGN, AND WILL NOT ASSUME RESPONSIBILITY FOR IMPROPER ENGINEERING OR USE.

Lighting by Jonathan M. Fuchs

Directed by Aubrey Berg
 Scenery by Brian Ruggaber
 Assistant Lighting Designers: Rende Miller
 Master Electrician Robert Moyer
 gregory s. falcione



SECTION

DRAWN BY: JMF SCALE: 1/4" = 1'-0"

Due Dates:
 #1 January 22 07 PRELIM
 #2 January 29 07 FINAL
 #3 February 12 07 LOAD-INFOCUS
 #4 February 22 07 SHOW OPENING
 #5 April 10 07 THESIS BOOK
 Designer Version: #4 Updated
 Date: 3/14/07

PLATE #
3
 OF 3