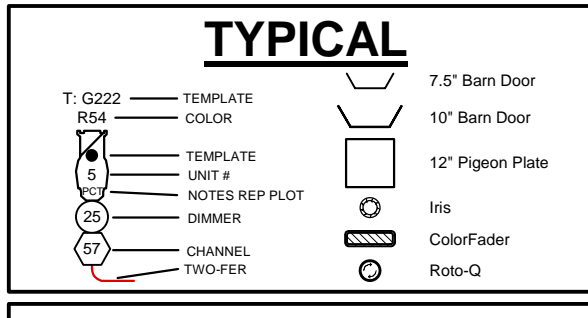
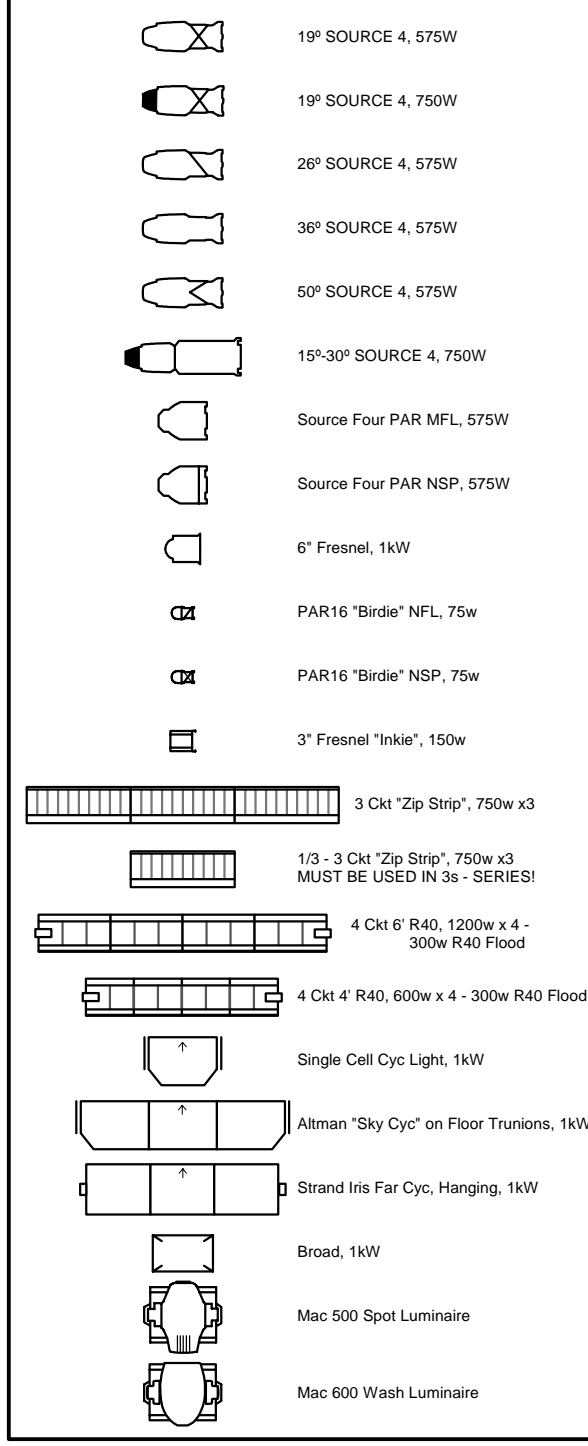


DESCRIPTION	D TO PL	TRIM	#
OVERCAMA	+107'-0"	OUT	47
SKY DROP	+107'-0"	SECT. OUT	46
18" Stage Side Rig	+107'-0"	BOOK	45
	+107'-0"		44
ELECTRIC #5	+107'-0"		43
TASKING LEGS	+107'-0"		42
BLADE TRAVELER	+107'-0"	OUT	41
BORDER #5	+107'-0"		40
	+107'-0"		39
	+107'-0"		38
	+107'-0"		37
BRIDGE #4	+107'-0"		36
	+107'-0"		35
BRIDGE #4	+107'-0"		34
	+107'-0"		33
BRIDGE #4	+107'-0"		32
BORDER #4	+107'-0"		31
	+107'-0"		30
	+107'-0"		29
	+107'-0"		28
	+107'-0"		27
BRIDGE #3	+107'-0"		26
	+107'-0"		25
BRIDGE #3	+107'-0"		24
BRIDGE #3	+107'-0"		23
	+107'-0"		22
	+107'-0"		21
BLADE TRAVELER	+107'-0"	OUT	20
BORDER #3	+107'-0"		19
	+107'-0"		18
On Stage Side Rig	+107'-0"		17
	+107'-0"		16
BRIDGE #2	+107'-0"		15
BRIDGE #2	+107'-0"		14
BRIDGE #2	+107'-0"		13
BRIDGE #2	+107'-0"		12
	+107'-0"		11
BORDER #2	+107'-0"		10
	+107'-0"		9
BRIDGE #1	+107'-0"		8
BRIDGE #1	+107'-0"		7
	+107'-0"		6
BRIDGE #1	+107'-0"		5
	+107'-0"		4
BORDER #1	+107'-0"		3
SHOW DROP	+107'-0"	BOOK	2
GRAND CURTAIN	+107'-0"		1
GRAND VALENCE	+107'-0"		1

Note: Soft Goods trim height is to bottom of goods.
Electrics trim height is to bottom of batten.

KEY TO SYMBOLS



NOTES

- ELECTRIC UNIT SPACING 1'-6" BETWEEN UNITS INCLUDING "TIC" MARKS, UNLESS OTHERWISE NOTED.
- ROOM UNIT SPACING 1'-6" BETWEEN RUNGS INCLUDING PIPE MARKS, UNLESS OTHERWISE NOTED.
- 3'-6" WITHIN CHANNELS. PLEASE ALLOW SPARE CIRCUITS THROUGHOUT PLOT.
- PLEASE HAVE ALL COLOR, TEMPLATES, AND ACCESSORIES IN UNITS BEFORE FOCUS. ALSO, HAVE EXTRA R113, DONUTS, BLACK WRAP AND BLACK TAP ON HAND.
- ALL PIPE TRIMS FROM STAGE FLOOR TO BOTTOM OF PIPE. ALL SOFT GOODS TRIM TO BOTTOM OF GOODS.
- FIRE RAG ELECTRICS AS NEEDED.
- R-RUSCO, L-LEE, G-GAM, F-F119, S-S113.
- UNITS WITH SCROLLERS ON THEM WILL BE PATCHED AS FIXTURES NOT AS REGULAR CHANNELS. SAME WITH ROTO-ON.
- TWO BOTTOM UNITS ON APRON BOOMS ADDED TO REPERTORY FIXTURES
- MAC 500s IN BEAM 2 PIPE OUT 3'
- BIRDS ON ROLLING PLATFORM LAMPED @ NARROW
- ALL OTHER BIRDS FLOOR MOUNTED
- ALL INKIES MOUNTED ABOVE HEAD-HIGH - 6"
- GROUND ROW UNITS TO BE ELEVATED 4'-6". EXACT METHOD AT DISCRETION OF ME & RME
- RENT 4 - 10' BRIDGE SCAFFOLDING PLANKS

THIS DRAWING REPRESENTS VISUAL CONCEPTS AND CONSTRUCTION SUGGESTIONS ONLY, AND DOES NOT REPLACE THE KNOWLEDGE AND ADVICE OF A LICENSED STRUCTURAL ENGINEER. THE DESIGNER AND HIS ASSISTANTS ARE UNQUALIFIED TO DETERMINE THE STRUCTURAL APPROPRIATENESS OF THIS DESIGN, AND WILL NOT ASSUME RESPONSIBILITY FOR IMPROPER ENGINEERING OR USE.

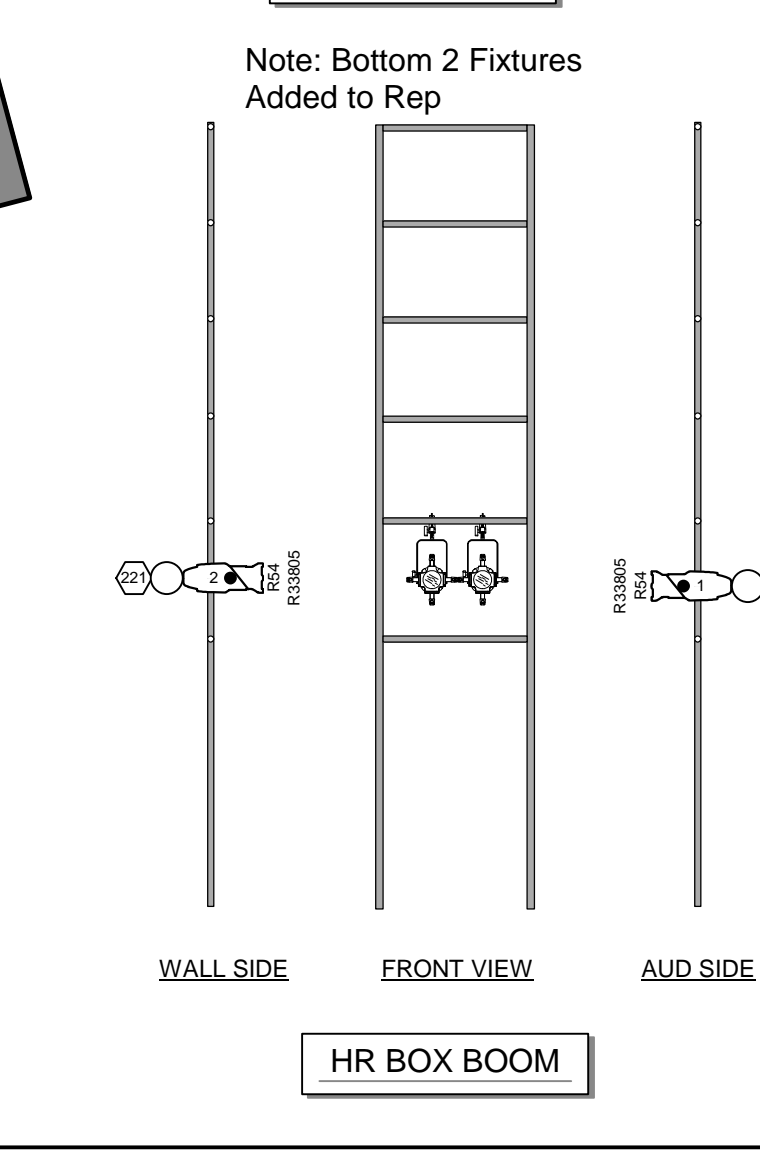
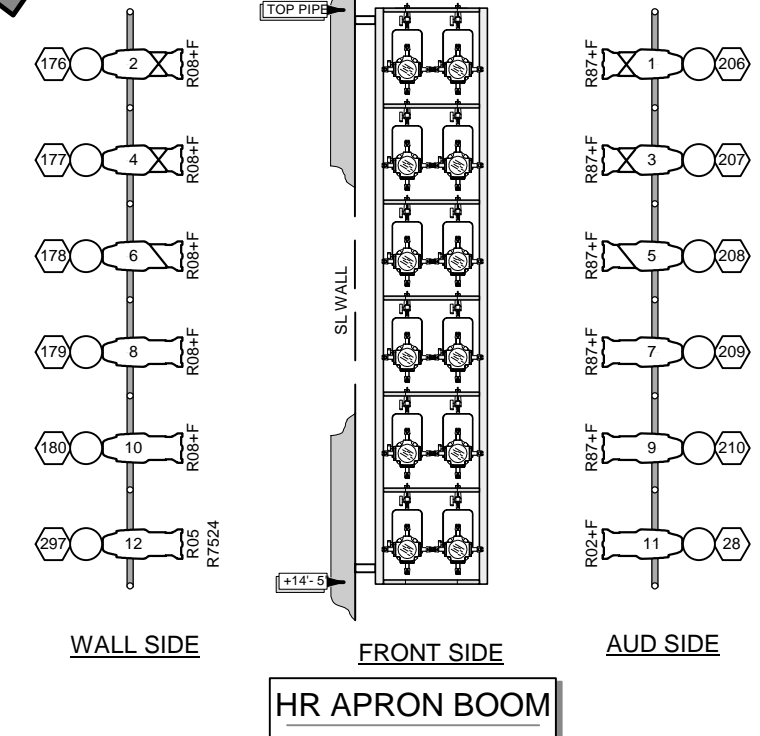
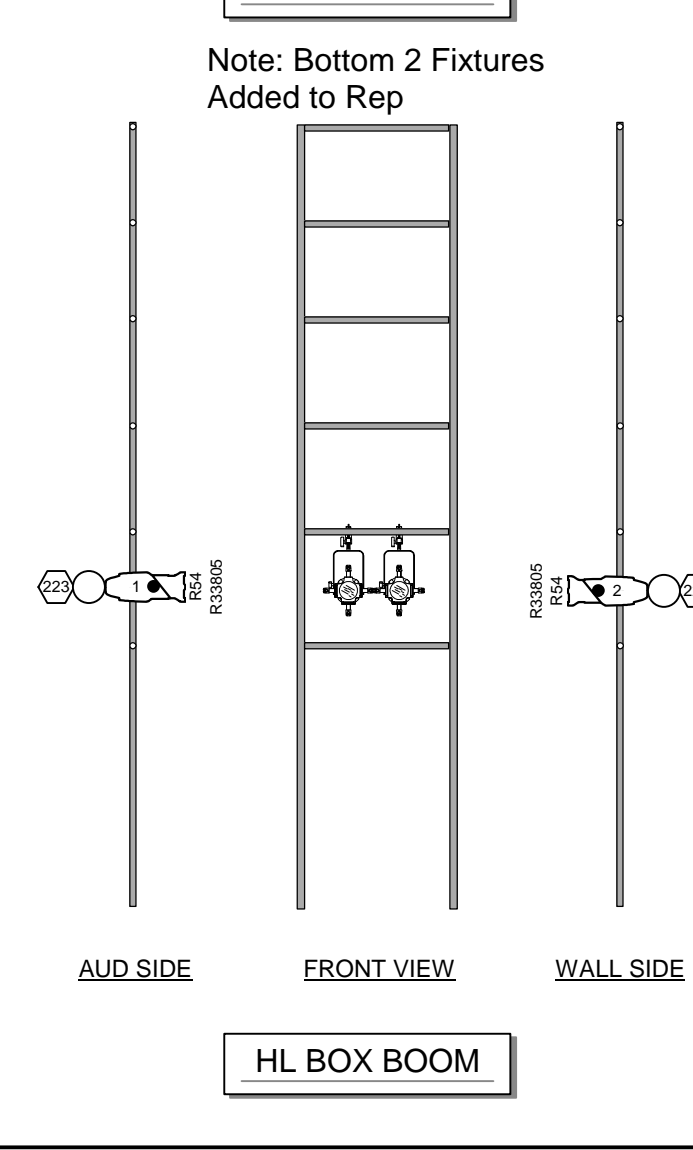
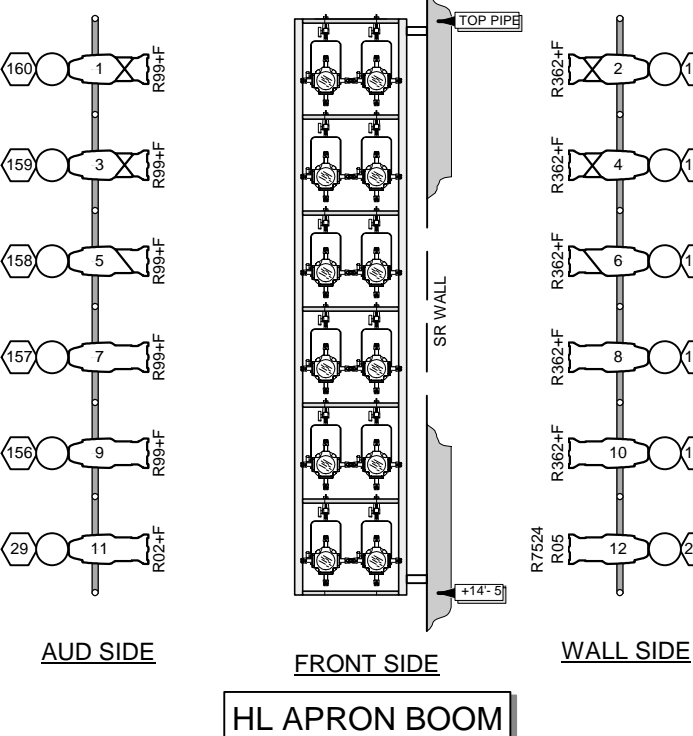
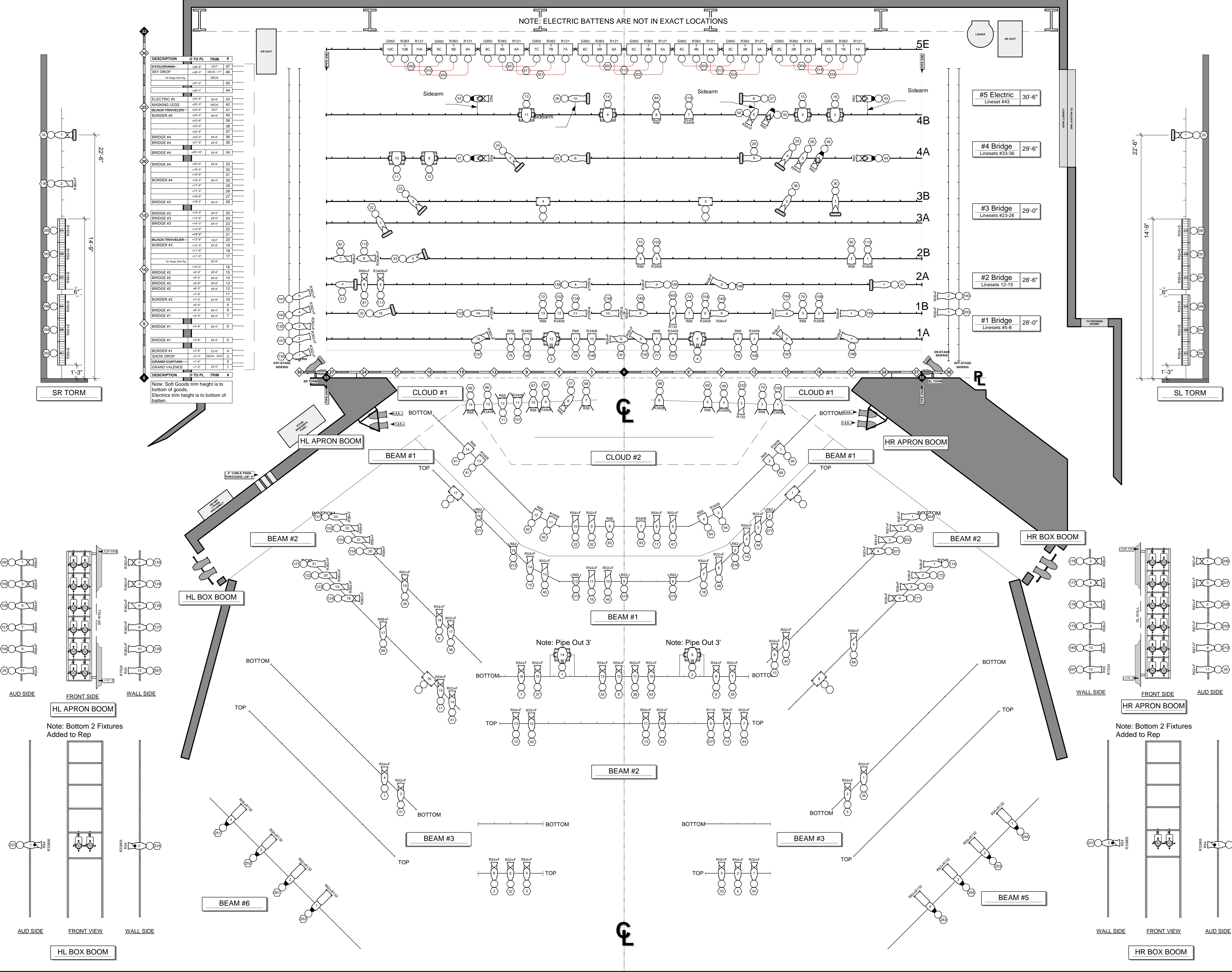
UC-COM
THEATRE DESIGN & PRODUCTION
LIGHTING DEPARTMENT
513.556.9934
www.com.uc.edu/dtp/

LIGHT PLOT OVERHEAD



Lighting by
Jonathan M. Fuchs
Directed by Marsha Hanna
Scenery by Matt Steinbrenner
Costumes by Courtney Jones
Assistant Lighting Designer Dmitri J. Salmiri
Master Electrician Travis Hagenbuch

DRAWN BY: **JMF & DJS** SCALE: **1/4" = 1'-0"**
Due Dates: #1 6 March '06 PRE-PRELIM #2 10 March '06 PRELIM #3 27 March '06 FINAL #4 8 April '06 LOAD-INFOCUS #5 20 April '06 SHOW OPENING
Designer Version: #3 FINAL
Date: 3/26/06



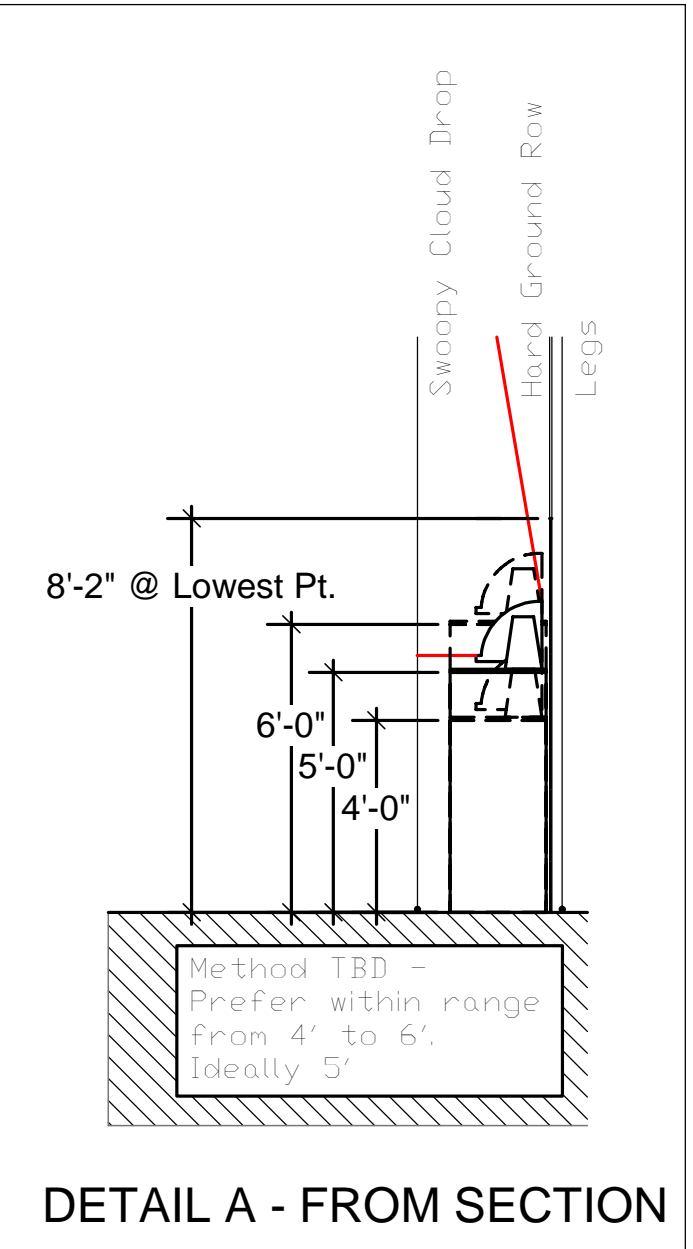
Note: Bottom 2 Fixtures Added to Rep

Note: Bottom 2 Fixtures Added to Rep

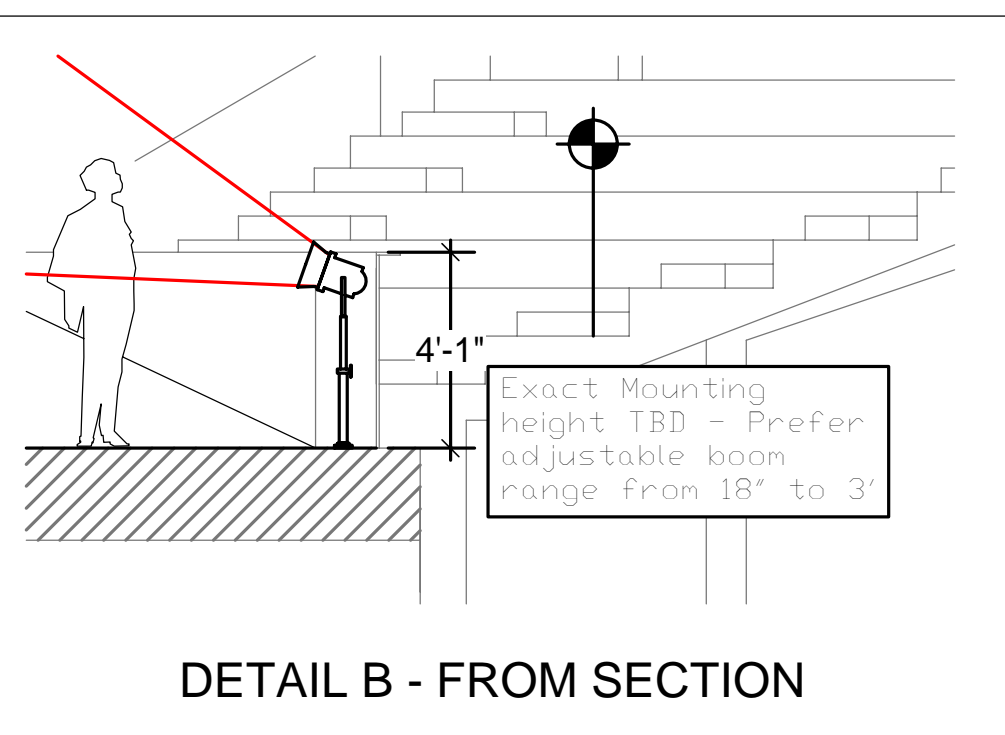
Note: Pipe Out 3'

Note: Pipe Out 3'

NOTE: ELECTRIC BATTENS ARE NOT IN EXACT LOCATIONS



DETAIL A - FROM SECTION



DETAIL B - FROM SECTION

DESCRIPTION	D TO PL	TRIM	#
SYNCHRONAMA	+20'-0"	OUT	47
SKY DROP	+20'-0"	SECT. F1	46
MR16s 100w	+20'-0"	BOOK	45
	+20'-0"		44
ELECTRIC #5	+20'-0"	30'-0"	43
MASKING LEGS	+20'-0"	BOOK	42
BLADE TRAVELER	+20'-0"	OUT	41
BORDER #5	+20'-0"	30'-0"	40
	+20'-0"		39
	+20'-0"		38
BRIDGE #4	+20'-0"	29'-0"	37
	+20'-0"		36
BRIDGE #4	+20'-0"	29'-0"	35
	+20'-0"		34
BRIDGE #4	+20'-0"	29'-0"	33
	+20'-0"		32
	+20'-0"		31
BORDER #4	+20'-0"	29'-0"	30
	+20'-0"		29
	+20'-0"		28
BRIDGE #3	+20'-0"	29'-0"	27
	+20'-0"		26
BRIDGE #3	+20'-0"	29'-0"	25
	+20'-0"		24
BRIDGE #3	+20'-0"	29'-0"	23
	+20'-0"		22
	+20'-0"		21
BLADE TRAVELER	+20'-0"	OUT	20
BORDER #3	+20'-0"	29'-0"	19
	+20'-0"		18
	+20'-0"		17
BRIDGE #2	+20'-0"	29'-0"	16
	+20'-0"		15
BRIDGE #2	+20'-0"	29'-0"	14
	+20'-0"		13
BRIDGE #2	+20'-0"	29'-0"	12
	+20'-0"		11
BORDER #2	+20'-0"	29'-0"	10
	+20'-0"		9
BRIDGE #1	+20'-0"	29'-0"	8
	+20'-0"		7
BRIDGE #1	+20'-0"	29'-0"	6
	+20'-0"		5
BORDER #1	+20'-0"	29'-0"	4
SHOW DROP	+20'-0"	BOOK	3
GRAND CHAFFAN	+20'-0"	OUT	2
GRAND VALENCE	+20'-0"	OUT	1

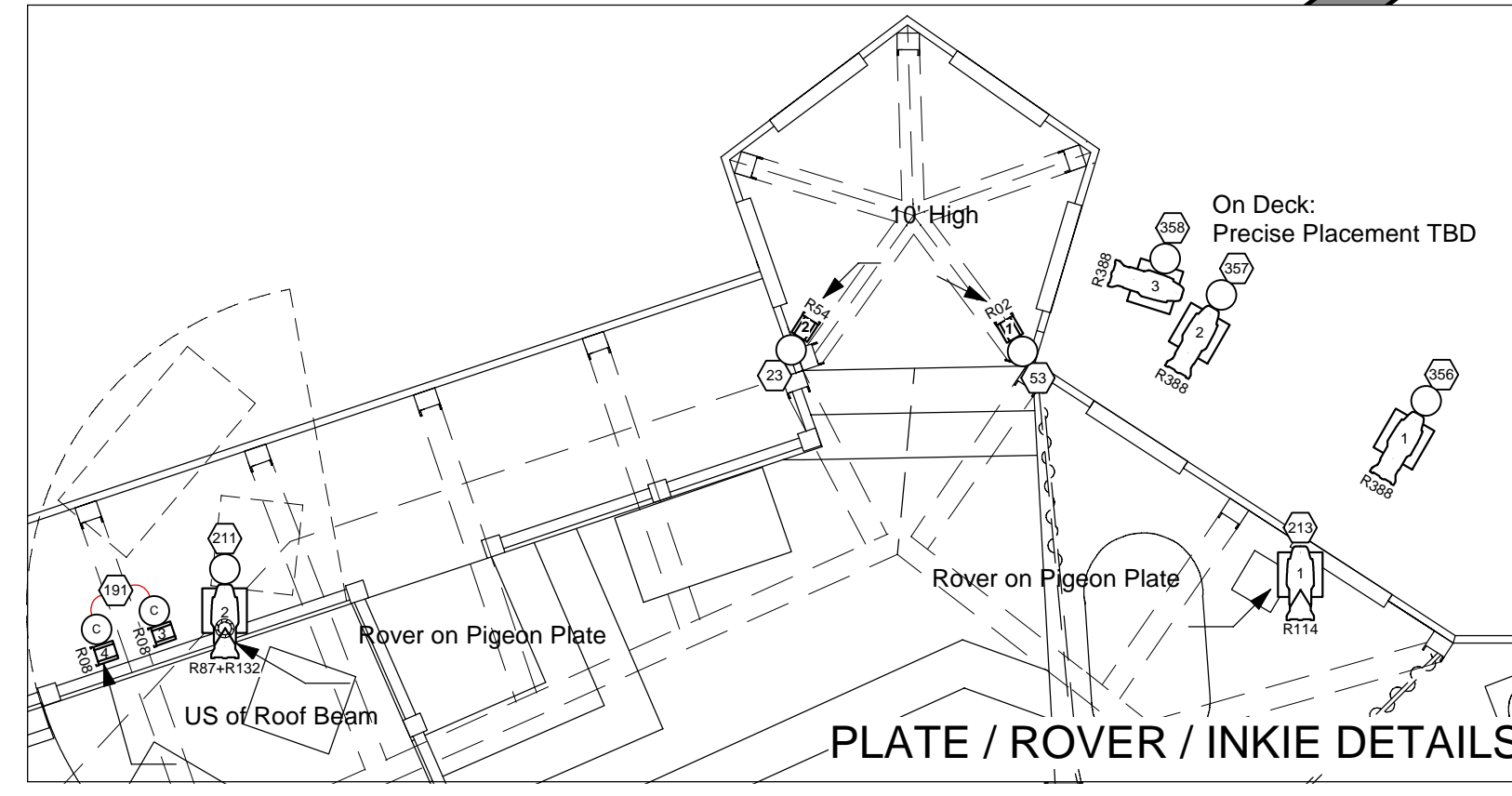
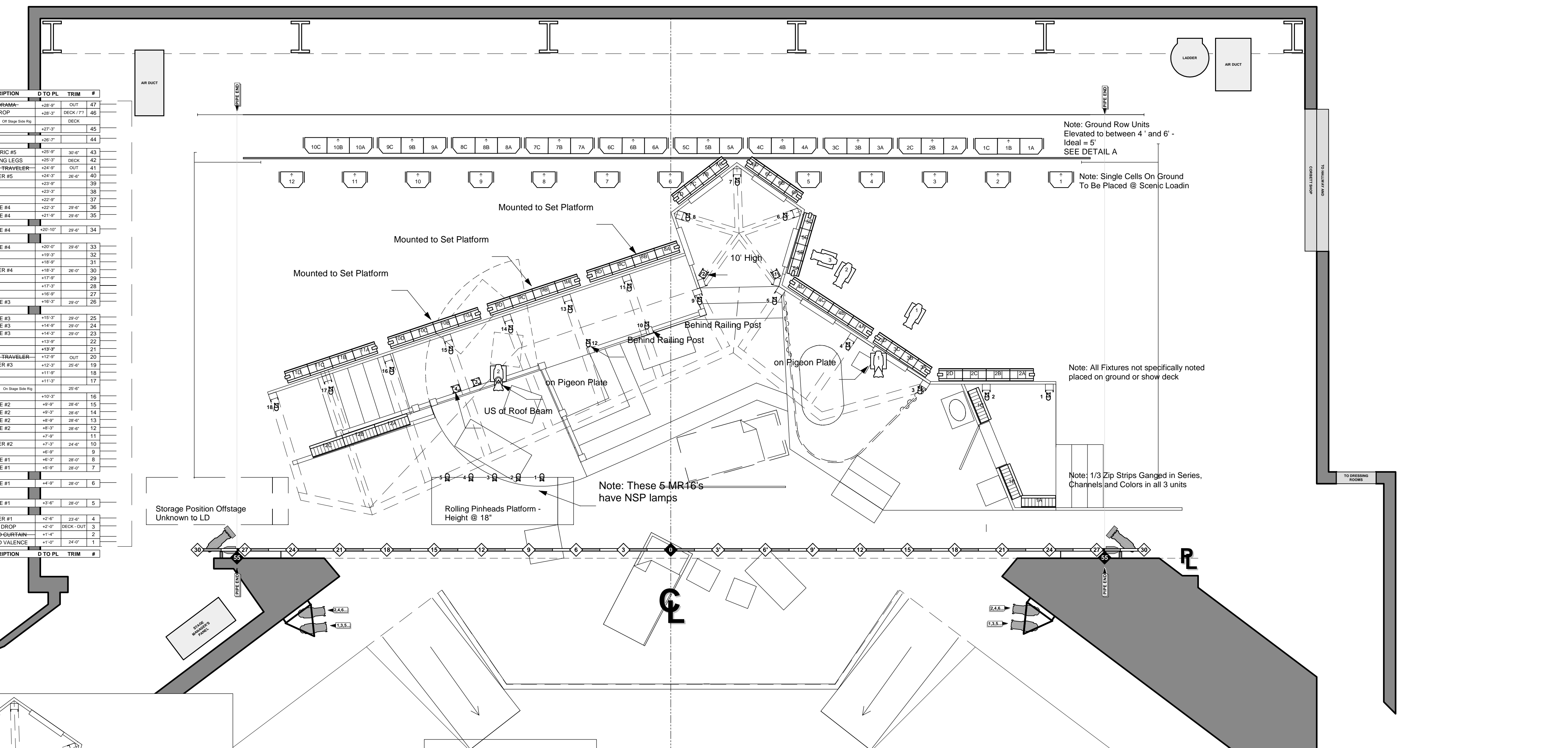
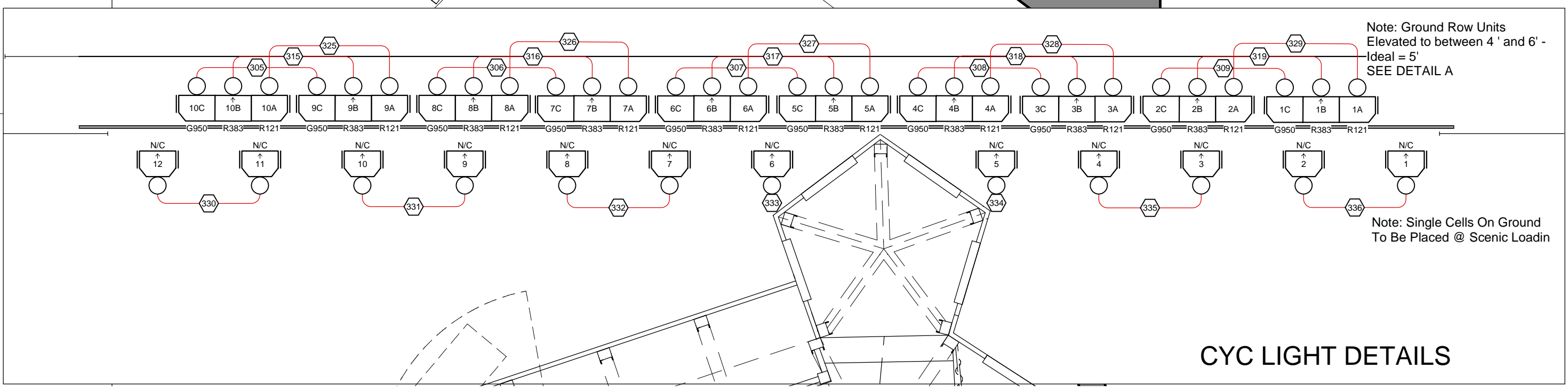
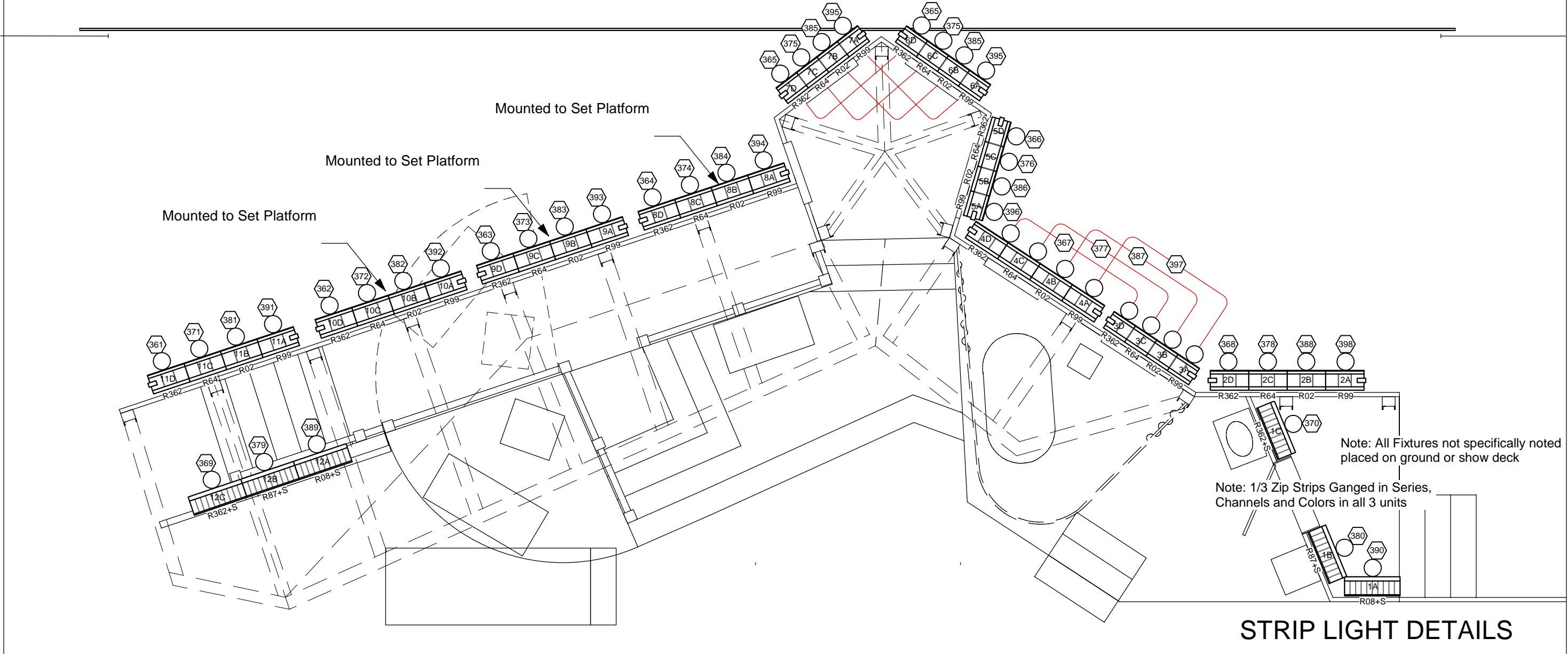


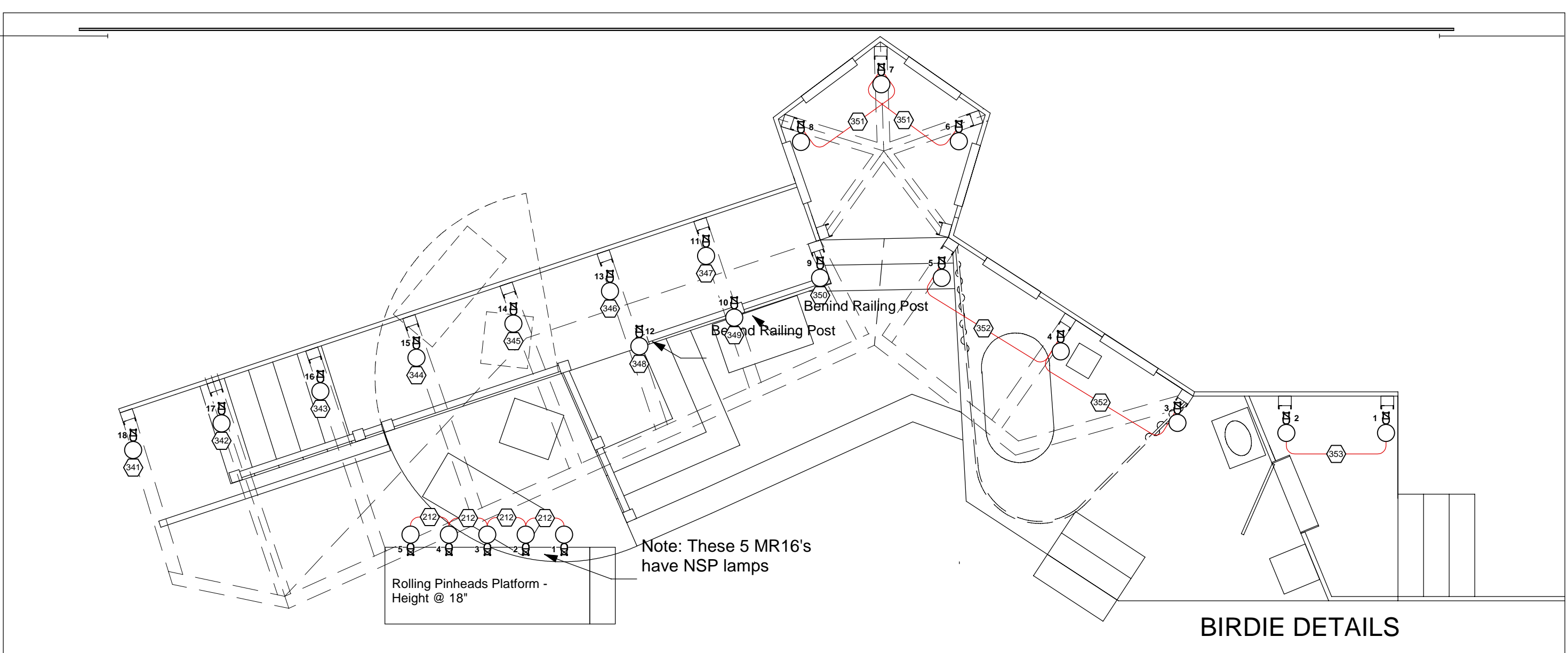
PLATE / ROVER / INKIE DETAILS



CYC LIGHT DETAILS

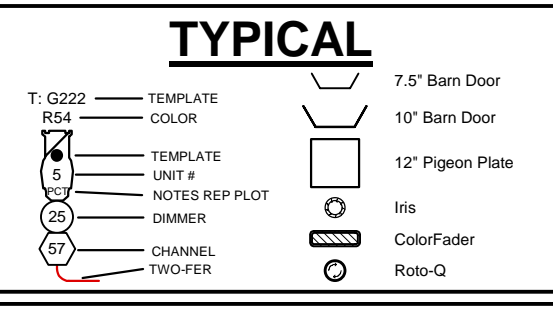
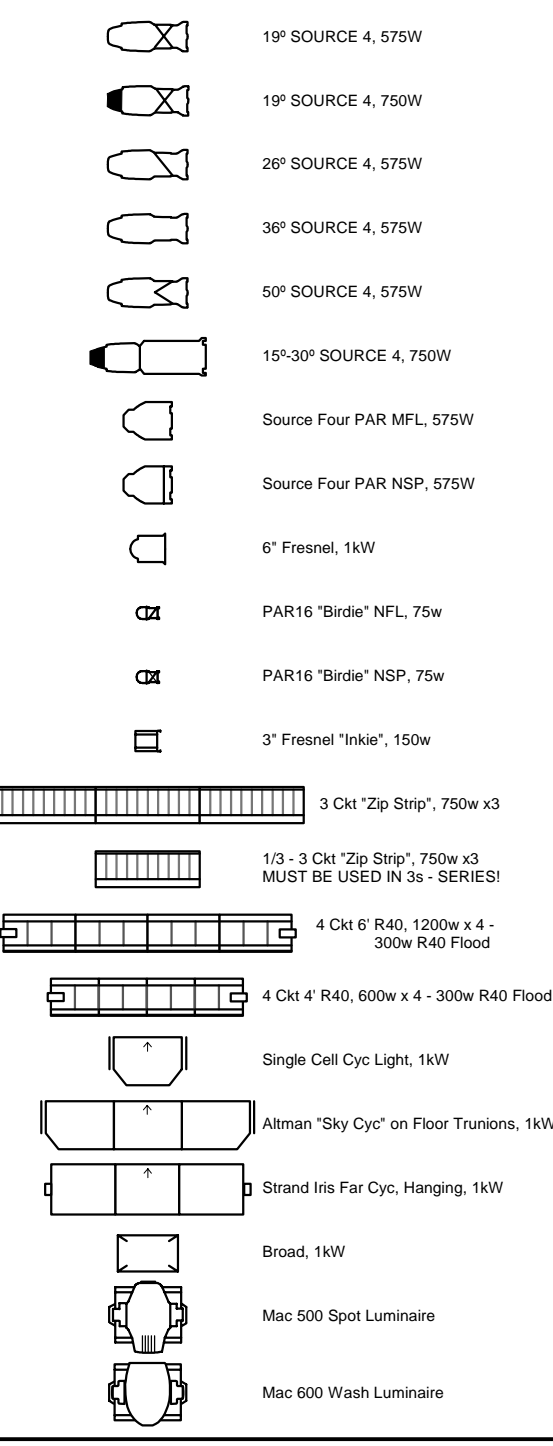


STRIP LIGHT DETAILS



BIRDIE DETAILS

KEY TO SYMBOLS



NOTES

1. ELECTRIC UNIT SPACING 1'-6" BETWEEN UNITS INCLUDING "TIC" MARKS, UNLESS OTHERWISE NOTED.
2. BOOM UNIT SPACING 1'-6" BETWEEN RUNGS INCLUDING PIPE MARKS, UNLESS OTHERWISE NOTED.
3. 3-FER WITHIN CHANNELS. PLEASE ALLOW SPARE CIRCUITS THROUGHOUT PLOT.
4. PLEASE HAVE ALL COLOR, TEMPLATES, AND ACCESSORIES IN UNITS BEFORE FOCUS. ALSO, HAVE EXTRA R119, DONUTS, BLACK WRAP AND BLACK TAP ON HAND.
5. ALL PIPE TRIMS FROM STAGE FLOOR TO BOTTOM OF GOODS.
6. FIRE RAG ELECTRICS AS NEEDED.
7. R-ROSCO, L-LEE, G-GAM, F-F119, S-S113.
8. UNITS WITH SCROLLERS ON THEM WILL BE PATCHED AS FIXTURES NOT AS REGULAR CHANNELS. SAME WITH ROTO-ON.
9. TWO BOTTOM UNITS ON APRON BOOMS ADDED TO REPERTORY FIXTURES
10. MAC 500s IN BEAM 2 PIPE OUT 3'
11. BIRDS ON ROLLING PLATFORM LAMPED @ NARROW
12. ALL OTHER BIRDS FLOOR MOUNTED
13. ALL INKIES MOUNTED ABOVE HEAD-HIGH - 6'
14. GROUND ROW UNITS TO BE ELEVATED 4'-6". EXACT METHOD AT DISCRETION OF ME & RME
15. RENT 4 - 10' BRIDGE SCAFFOLDING PLANKS

THIS DRAWING REPRESENTS VISUAL CONCEPTS AND CONSTRUCTION SUGGESTIONS ONLY, AND DOES NOT REPLACE THE KNOWLEDGE AND ADVICE OF A LICENSED STRUCTURAL ENGINEER. THE DESIGNER AND HIS ASSISTANTS ARE UNQUALIFIED TO DETERMINE THE STRUCTURAL APPROPRIATENESS OF THIS DESIGN, AND WILL NOT ASSUME RESPONSIBILITY FOR IMPROPER ENGINEERING OR USE.

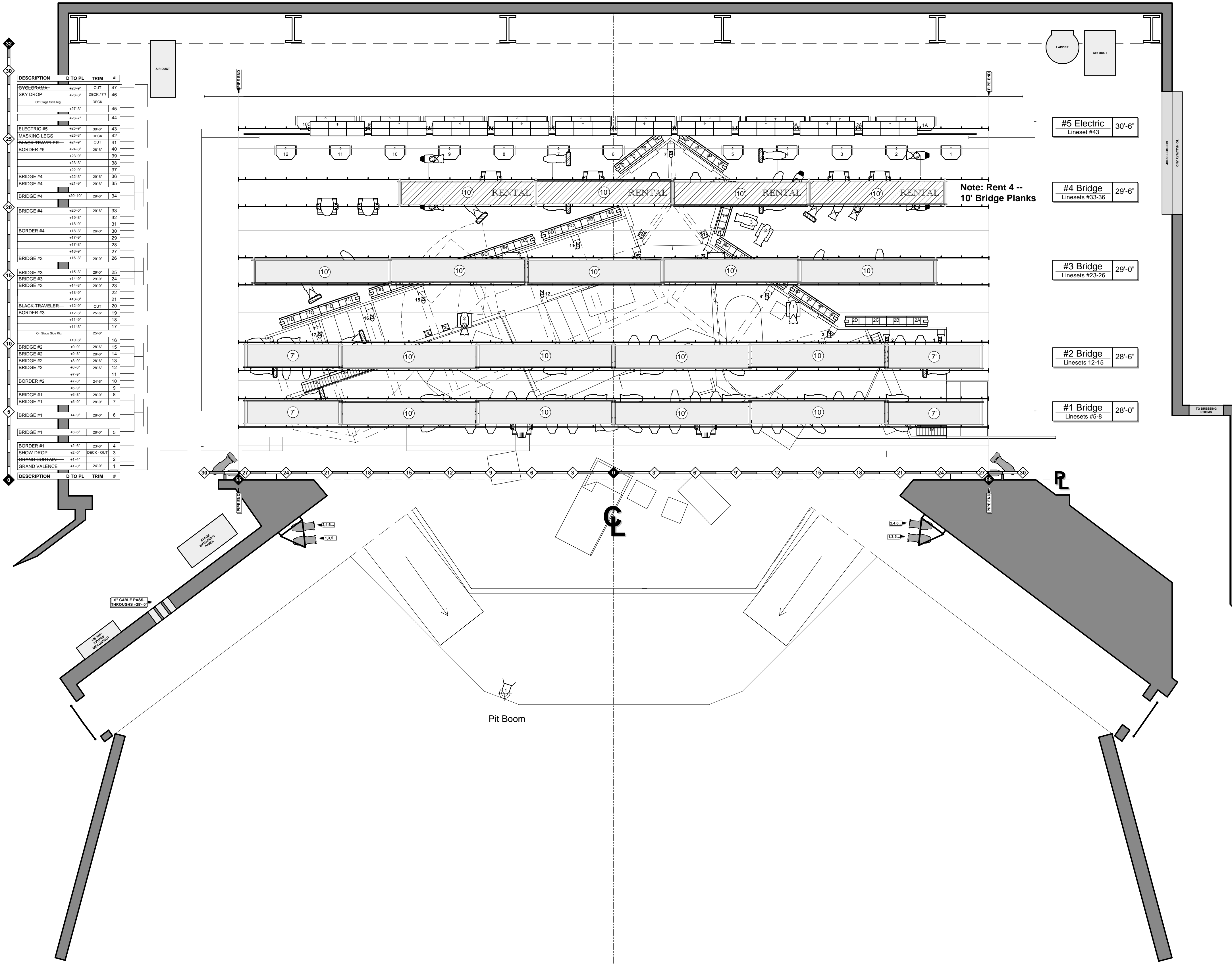
UC-COM THEATRE DESIGN & PRODUCTION LIGHTING DEPARTMENT 513.556.9934 www.com.edu/tdp/

LIGHT PLOT DECK PLOT



Lighting by Jonathan M. Fuchs
 Directed by Marsha Hanna
 Scenery by Matt Steinbrenner
 Costumes by Courtney Jones
 Assistant Lighting Designer: Dmitri J. Salmin
 Master Electrician: Travis Hagenbuch

DRAWN BY: JMF & DJS
 SCALE: 1/4" = 1'-0"
 Due Dates:
 #1 6 March '06 PRE-PRELIM
 #2 10 March '06 PRELIM
 #3 27 March '06 FINAL
 #4 8 April '06 LOAD-INFOCUS
 #5 20 April '06 SHOW OPENING
 Designer Version: #3 FINAL
 Date: 3/26/06



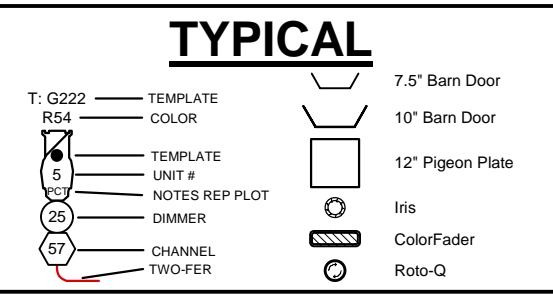
DESCRIPTION	D TO PL	TRIM	#
OVERCROWD	+20'-0"	OUT	47
SKY DROP	+20'-0"	BECK, F1	46
18" Stage Side Rig	+20'-0"	BECK	45
	+20'-0"		44
ELECTRIC #5	+20'-0"	30'-6"	43
TRUSSING LEGS	+20'-0"	BECK	42
BLADE TRAVELER	+20'-0"	OUT	41
BORDER #5	+20'-0"	30'-6"	40
	+20'-0"		39
	+20'-0"		38
	+20'-0"		37
BRIDGE #4	+20'-0"	28'-0"	36
BRIDGE #4	+20'-0"	28'-0"	35
BRIDGE #4	+20'-0"	28'-0"	34
BRIDGE #4	+20'-0"	28'-0"	33
	+18'-0"		32
BORDER #4	+18'-0"	28'-0"	31
	+15'-0"		30
	+15'-0"		29
	+15'-0"		28
	+15'-0"		27
BRIDGE #3	+15'-0"	28'-0"	26
BRIDGE #3	+15'-0"	28'-0"	25
BRIDGE #3	+15'-0"	28'-0"	24
BRIDGE #3	+15'-0"	28'-0"	23
	+13'-0"		22
	+13'-0"		21
BLADE TRAVELER	+12'-0"	OUT	20
BORDER #3	+12'-0"	28'-0"	19
	+11'-0"		18
On Stage Side Rig	+11'-0"	28'-0"	17
	+10'-0"		16
BRIDGE #2	+10'-0"	28'-0"	15
BRIDGE #2	+10'-0"	28'-0"	14
BRIDGE #2	+10'-0"	28'-0"	13
BRIDGE #2	+10'-0"	28'-0"	12
	+7'-0"		11
BORDER #2	+7'-0"	28'-0"	10
	+6'-0"		9
BRIDGE #1	+6'-0"	28'-0"	8
BRIDGE #1	+6'-0"	28'-0"	7
BRIDGE #1	+6'-0"	28'-0"	6
BRIDGE #1	+6'-0"	28'-0"	5
BORDER #1	+4'-0"	28'-0"	4
SHOW DROP	+2'-0"	BECK, OUT	3
GRAND CURTAIN	+1'-0"		2
GRAND VALENCE	+1'-0"	24'-0"	1

- #5 Electric
Linesets #43
30'-6"
- #4 Bridge
Linesets #33-36
28'-6"
- #3 Bridge
Linesets #23-26
29'-0"
- #2 Bridge
Linesets 12-15
28'-6"
- #1 Bridge
Linesets #5-8
28'-0"

Note: Rent 4 - 10' Bridge Planks

KEY TO SYMBOLS

- 19" SOURCE 4, 575W
- 19" SOURCE 4, 750W
- 26" SOURCE 4, 575W
- 36" SOURCE 4, 575W
- 50" SOURCE 4, 575W
- 15"30" SOURCE 4, 750W
- Source Four PAR MFL, 575W
- Source Four PAR NSP, 575W
- 6" Fresnel, 1KW
- PAR16 "Bird" NFL, 75w
- PAR16 "Bird" NSP, 75w
- 3" Fresnel "Ink", 150w
- 3 Ch "Zip Step", 750w x3
- 1/3 - 3 Ch "Zip Step", 750w x3
MUST BE USED IN 3x3 SERIES!
- 4 Ch 6" R40, 600w x 4 - 300w R40 Flood
- 4 Ch 4" R40, 600w x 4 - 300w R40 Flood
- Single Cell Cyc Ligh, 1KW
- Alman "Sky Cyc" on Floor Trusses, 1KW
- Stand In's Far Cyc, Hanging, 1KW
- Broad, 1KW
- Mac 500 Spot Luminare
- Mac 800 Wash Luminare



NOTES

1. ELECTRIC UNIT SPACING 1'-6" BETWEEN UNITS INCLUDING "TIC" MARKS, UNLESS OTHERWISE NOTED.
2. BOOM UNIT SPACING 1'-6" BETWEEN RUNGS INCLUDING PIPE MARKS, UNLESS OTHERWISE NOTED.
3. 3-FER WITHIN CHANNELS. PLEASE ALLOW SPARE CIRCUITS THROUGHOUT PLOT.
4. PLEASE HAVE ALL COLOR, TEMPLATES, AND ACCESSORIES IN UNITS BEFORE FOCUS. ALSO, HAVE EXTRA R119, DONUTS, BLACK WRAP AND BLACK TAPE ON HAND.
5. ALL PIPE TRIMS FROM STAGE FLOOR TO BOTTOM OF PIPE. ALL SOFT GOODS TRIM TO BOTTOM OF GOODS
6. FIRE RAG ELECTRICS AS NEEDED.
7. R=ROSCO, L=LEE, G=GAM, F=F119, S=S113.
8. UNITS WITH SCROLLERS ON THEM WILL BE PATCHED AS FIXTURES NOT AS REGULAR CHANNELS. SAME WITH ROT-Q.
9. TWO BOTTOM UNITS ON APRON BOOMS ADDED TO REPERTORY FIXTURES
10. MAC 500s IN BEAM 2 PIPE OUT 3'
11. BIRDS ON ROLLING PLATFORM LAMPED @ NARROW
12. ALL OTHER BIRDS FLOOR MOUNTED
13. ALL INKIES MOUNTED ABOVE HEAD-HIGH - 6'
14. GROUND ROW UNITS TO BE ELEVATED 4'-6". EXACT METHOD AT DISCRETION OF ME & RME
15. RENT 4 - 10' BRIDGE SCAFFOLDING PLANKS

THIS DRAWING REPRESENTS VISUAL CONCEPTS AND CONSTRUCTION SUGGESTIONS ONLY, AND DOES NOT REPLACE THE KNOWLEDGE AND ADVICE OF A LICENSED STRUCTURAL ENGINEER. THE DESIGNER AND HIS ASSISTANTS ARE UNQUALIFIED TO DETERMINE THE STRUCTURAL APPROPRIATENESS OF THIS DESIGN, AND WILL NOT ASSUME RESPONSIBILITY FOR IMPROPER ENGINEERING OR USE.

UC-COM
THEATRE DESIGN & PRODUCTION
LIGHTING DEPARTMENT
513.556.9934
www.com.uc.edu/tdp/

LIGHT PLOT BRIDGES

College Conservatory of Music

Patricia Corbett Theater

The Elephant Man

Clintchiro

Lighting by
Jonathan M. Fuchs

Directed by Marsha Hanna
Scenery by Matt Steinbrenner
Costumes by Courtney Jones
Assistant Lighting Designer .. Dmitri J. Salmin
Master Electrician Travis Hagenbuch

DRAWN BY: **JMF & DJS** SCALE: **1/4" = 1'-0"**

Due Dates: #1 6 March '06 PRE-PRELIM #2 10 March '06 PRELIM #3 27 March '06 FINAL #4 8 April '06 LOAD-IN/FOCUS #5 20 April '06 SHOW OPENING

Designer Version: #3 FINAL
Date: 3/26/06

PLATE # **3**
OF 4